

DATA  
Parking for  
300 cars  
(Free of charge)  
☎0478-57-3211

## Katori Shrine is awarded as a National Important Cultural Properties

Katori Shrine is known as a God of Win and well visited by any kind of sport players who want to ask for their success. It is also popular among women in Japan as a "Power Spot". There are also shops selling a famous Katori Shrine Kusa Dango (Mugwort flavoured rice dumpling) and you can also enjoy a tea break along the walkway.

## ACCESS

### 【Tokyo Station】

- From Tokyo Station it takes 112 min by JR Express and JR Narita Railways
- From Tokyo Station it takes 85 min by Highway Bus
- 【Narita Airport Station】
- From Narita airport it takes 40 min by car
- From Narita Airport Station to Narita Station it takes 15min and plus 30 min to JR Sawara station

## Sawara Festival Informations



DATA  
☎ End of May to  
End of June  
☎ 0478-56-0411

### Ayame Festival

It was said that they are the biggest in amount of species, in the Orient region, where 1,500,000 of Sword Lily flower from 400 species will bloom at once with various color such as purple, white, pink and blue. And, you can also move through the waterways in the garden by a small boat called Sappa Boat. Sword Lily from the waterway view is also an exceptional beauty.



DATA  
☎ Summer  
(Honjuku Giyon  
Festival)  
Autumn  
(Suwa Shrine  
Autumn Festival)

### Sawara Grand Festival

Summer Festival and Autumn Festival (National Important Non Building Cultural Properties) are held twice a year. It is called one of the Kanto three biggest Float (Portable Shrine) Festival, and the tradition continues for approximate 300 years. While the sound of the Japan's three biggest festival sound, "Sawara Sound" reverberated through the town, the Float moving slowly through a narrow street between houses along the townscape called Koedo (Nationally Selected Traditional Buildings Preservation District) which is full of thrill and a powerful festival with a scene of the Edo era.



## UNESCO Intangible Cultural Heritage

# Vintage townscape and gourmet travel

Easy to access from Narita Airport.  
With Preserved Japanese Traditional Buildings,  
which is also popular for movie and drama shooting.

Sawara was once succeed in Water Transportation Business during Edo Era, and the traditional look town is still there. Sawara was the first selected for Kanto Area in 1996 for "National Important Cultural Buildings Preserve District" by the Japanese Government. There are still a lot of long life business still continued by their successor and well known as "Evergreen town". You'll be able to discover a different taste from walking, by ride a sightseeing boat on Onogawa river that slowly flowing through the center of the town, enjoy the retro feeling on a comfort tourist boat.



**18 佐原観光遊覧船**  
Sawara Kanko yuransen/  
Sawara Sightseeing Boats

Town with Edo Era looks. Could enjoy the water cruising by boat through Onogawa river which running across the town. You can find another different taste when compare to walking. During winter, there is "Kotatsu Bune" that provide a Japanese style heater to warm you up along cruising. It is good opportunity to experience the Japanese traditional culture.  
Koedo Sawara Town Sight Seeing Pack (30Minutes)  
Adult 1,300Yen, Child 700Yen(Under 12Years Old)



Dusan Bridge (Jaaaaaa Bridge)

I will be your on-boat guider



☎ Jan.-Feb. 10:00 ~ 15:00  
Mar. 10:00 ~ 15:30  
Apr. 10:00 ~ 16:00  
May. to Sep. 10:00 ~ 16:30  
Oct. to Nov. 10:00 ~ 15:30  
Dec. 10:00 ~ 15:00  
☎ irregular holidays



**19 Kimera Parking**

Max 4 spaces for Seight Seeing Bus.  
(Call for reservation) 2,000 Yen per day. Max 30 spaces for Personal vehicle. 550 Yen per day.  
☎ 0478-52-9313

**Kimera Parking rest area.**  
Shoyu(Soy Sauce)  
Soft Ice Cream. 350 Yen

It's Popular!!



**20 Burekimera**

☎ 0478-55-9380

Equipped with wash room.  
Also tables and chairs to take a short rest.



**21 Station Exit Tourist Information Center**

☎ 0478-52-6675

☎ 9:00 ~ 17:00

☎ New Year's Day  
Rental fee: 500 Yen a day.  
Only Japanese language available.

Bicycle rental also available

## Tour Menu

Possible day trip from Tokyo

9:40	Depart from Tokyo Station Bus Stop
11:00	Arrive at Sawara. Walk to Onogawa river.
11:15	Inogami Beauty Parlor for Kimono Experience
12:10	Lunch in Kimono
13:40	Ride a Sightseeing Boat
14:30	Find your souvenir at souvenir shops
15:30	Short rest at Café
16:20	Return Kimono and heading to Tokyo by HighwayBus
19:00	Arrive at Tokyo Station



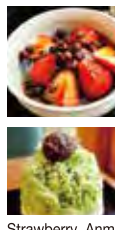
# Check the QR Code for your favorite shops!!

Find Maps, Hours of Operation, and Coupons as well. Check it out!



## 1 いなえ Inae

Famous Sweet Café among ladies. Can see European Style Building inside the shop where paintings gallery also opened. Souvenir Corner also available.



Strawberry Anmitsu( Kanten Jelly with Red beans) 820 Yen  
Uji Milk Gintoki Sweet Bean Shaved Ice 700 Yen (Seasonally Limited)

☎ 0478-54-7575

🕒 : 10:30 ~ 17:00

🚫 : Close on Wednesday.



## 2 カフェギャラリーるふな Cafe Gallery Rufuna

Cafe house run by a dollhouse maker. Many of the pieces are displayed inside. Try the fried shrimp sandwich. We have free wifi.

☎ 0478-79-8222

🕒 : 10:00 ~ 16:00 (Starting in June, Operating Hours will change to 10:30-16:30)

🚫 : Close on Monday.



## 3 井上美容院 Chibuan Inoue

Wear the popular Kimono and enjoy walking in the Japanese Old Era town. Upload your photo in Kimono to your SNS!! It's not only for women, men's Kimono also available.

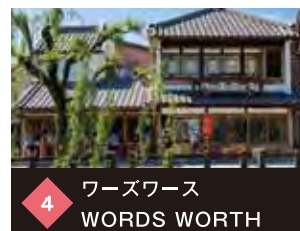
\*Size are limited.  
Hair setting+Kimono setting (Priority to reserve)  
Price:6,000 Yen  
Duration: 20 mins. To 30 mins  
Please return back your rental kimono by 5pm.

☎ 0478-52-2373

🕒 : 9:00 ~ 19:00

🚫 : Tuesday of 1st week of month, Wednesday of 3rd week of month

Reservations Here  
<https://www.facebook.com/sawarakimono/>



## 4 ワースワース WORDS WORTH

Lunch for 980 Yen - Affordable price. Eat at terrace seat on a good weather, while watching the scenery during your lunch may give you a lovely memory.

☎ 0478-50-0202

🕒 : 11:00 ~ 22:00

🚫 : Closed Wednesday. Non-fixed Holidays

Variable pasta and other menu also available.



## 5 植田屋荒物店 Uedayaaamonoten

Established since 2009. Offering Japanese oldies goods made by high skilled craftsman.

☎ 0478-52-2669

🕒 : 9:00 ~ 17:00

🚫 : irregular holidays



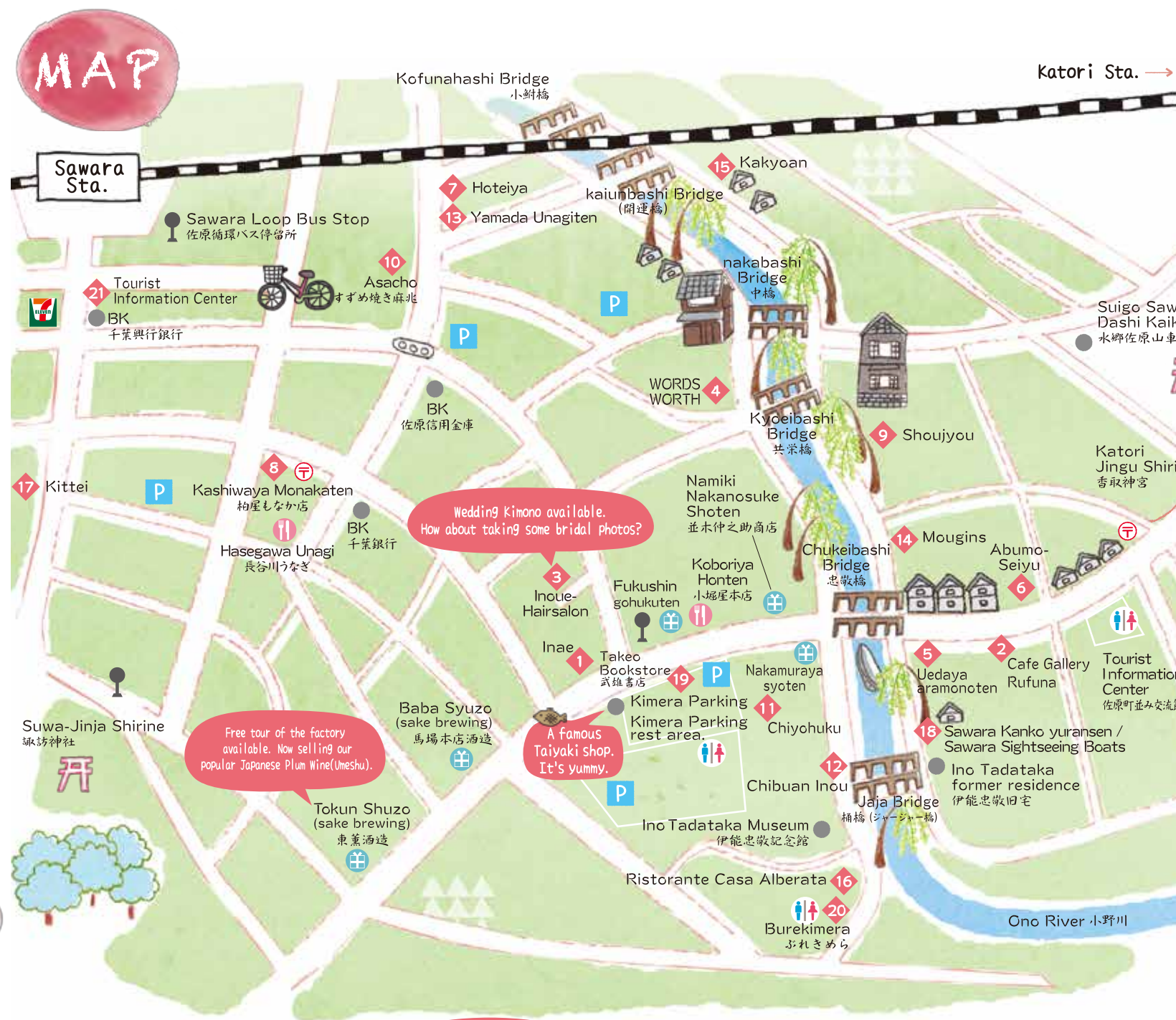
## 6 油茂製油 ABUNMO - SEIYU

Oil Factory established for more than 350 years. Popular [The taste that you will never forget] among tourist. If you like hot and spicy, please try.

☎ 0478-54-3438

🕒 : 9:00 ~ 18:00

🚫 : irregular holidays



Tonbo Dama Glass Ball making. Fabricate time:15minutes. Ready to bring it home after 1 hour.

### 7 ほていや Hoteiya

A Famous Sweet that been chosen as a gift to Emperor. The photo shows that Sawara Bayashi only used luxury butter and eggs as a raw material.

Sawara Bayashi 120 yen (Tax Included)

☎ 0478-52-2001

🕒 : 8:00 ~ 20:00

🚫 : Open 7 days a week

### 8 柏屋 もなか店 Kashiwaya Monakaten

Bite-sized Monaka 45 yen (each)

The sweet is still preserving the manufacturing method in traditional craftsmanship ways, with carefully screened material. Lot of Anko (red bean paste) is put inside.

☎ 0478-52-3707

🕒 : 8:30 ~ 18:00

🚫 : Open 7 days a week

### 9 正上 Shoujiyou

Selling beautiful necklace made from glass. If you can speak Japanese a little bit, you can experience Tonbo Dama glass ball making, supported by staff.

☎ 0478-54-1642

🕒 : 10:00 ~ 16:00 / Tonbo Dama Glass ball making 10:00~15:00

🚫 : irregular holidays

### 10 すずめ焼 麻兆 Asachou

Sawara is famous for Tsukudani and you can try traditionally made Tsukudani here. We also have a special item made with Unagi Eel known as "Unagi Shigureni." There is a variety of Tsukudani gifts as well.

☎ 0120-52-3571

🕒 : 8:00 ~ 19:00

🚫 : Open seven days a week

### 14 夢時庵 Mougins

Cuisine cooked using local raw fresh materials by a popular chef, who was trained in France. The dessert is also recommended.

☎ 0478-52-2466

🕒 : Lunch 11:30~14:00 / Dinner 17:00~20:30

🚫 : Close on Tuesday

### 15 香蕎庵 Kakyoon

Try the handmade Soba by our French Chef in this 100 year old Japanese Home

☎ 0478-79-6101

🕒 : Lunch 11:30~15:00. Dinner 17:30~21:00

🚫 : Closed Wednesday, 1st and 3rd Tuesday

### 16 リストランテ カーザ・アルベラータ Ristorante Casa Alberata

The once trade shop has been remodel with a modern feel, immerse yourself in this relaxing environment complete with a traditional Japanese garden. Our Chef, trained in Italy, uses fresh ingredients to create popular flavors. Reservations Required.

☎ 0478-79-9422

🕒 : 11:30~15:00. 18:00~22:00

🚫 : Closed Every Monday and on Non-fixed Tuesdays

### 17 吉庭 Kittei

Based on French cuisine, our international French fusion cuisine uses the freshest local ingredients. Enjoy a delicious meal with views of our Japanese garden.

☎ 0478-55-0350

🕒 : 11:30~14:00. 17:30~21:00

🚫 : Closed Every Monday



## 11 日本料理店千よ福 Chiyohuku

Enjoy a cool Japanese Traditional House look restaurant with local seafoods and Japanese seasonal cuisine.

☎ 0478-52-1611

🕒 : Lunch 11:30~15:00 (LO14:00) Dinner 17:00~21:00 (LO20:00)

🚫 : Open 7 days a week



## 12 珈琲 遅歩庵いのう Chibuan Inou

Descendants of the Ino Family manage this old Japanese-style house and cafe. The elegant exterior has been used in TV Dramas and many visitors come to see this famous shop.

☎ 0478-54-2335

🕒 : 10:00 ~ 17:00

New Year's Opening Hours 11:00 ~ 17:00

🚫 : Irregular Holidays



## 13 山田うなぎ店 YamadaUnagiten

Eel restaurant that had been keeping their traditional recipe for 300 years since established. Feel the taste of eel that grilled and steamed by a traditional way with Kishu Charcoal. It is a selected and precious cuisine

☎ 0478-52-4375

🕒 : 11:00 ~ 14:30 16:30 ~ 19:30

🚫 : Close on Monday. Exchange to the next day if public holiday.

Weekends can be especially busy with visitors, so it may take some time to enter the store.

